

# Light is our Passion

**LED Linear**  
linear lighting solutions

## Linear LED Lighting Solutions

[www.ledlinear.com](http://www.ledlinear.com)

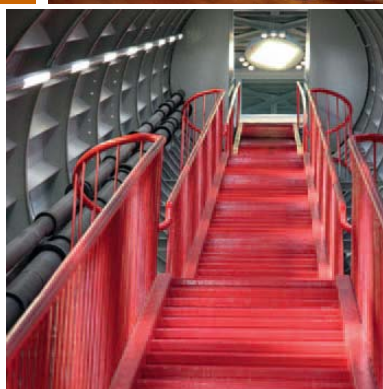
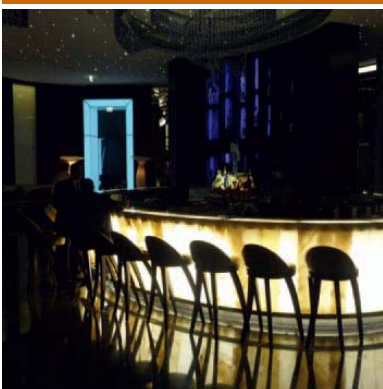
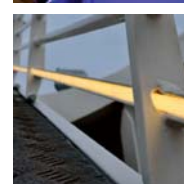
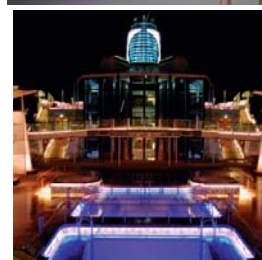
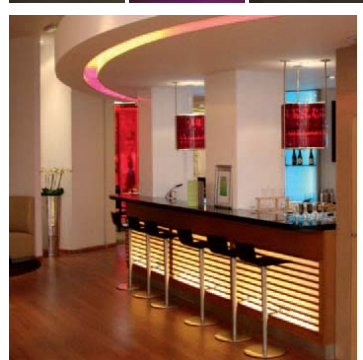
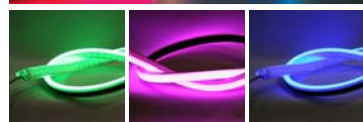
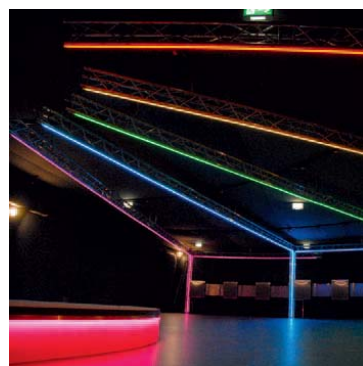
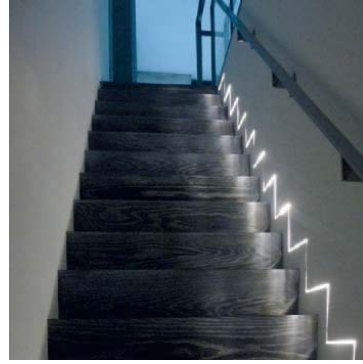
Our enterprise supplies, world-wide, high quality linear LED lighting solutions based on flexible printed circuit boards.

Our offering is a cost effective, unique modular LED tool kit for interior or exterior linear lighting solutions with an ingress protection of up to IP68.

Our international recognition and reference projects, including exquisite lighting solutions for decorative or architectural applications, stand as proof of our high quality manufacturing philosophy.

With our LED products you can economically realize general lighting tasks. Based on this philosophy and the depth of our LED knowledge we are constantly working on improving products for your lighting requirements.

Throughout the catalog pages we invite you to familiarize yourself with our unique LED Linear product portfolio. We are happy to provide solutions with knowledge and passion.



**SSL<sup>TG</sup>** | LIGHTING & CONTROLS  
REPRESENTATIVES

680 Crown Industrial Ct. Chesterfield, MO 63005  
P.314.429.5483 [www.ssltg.com](http://www.ssltg.com)